

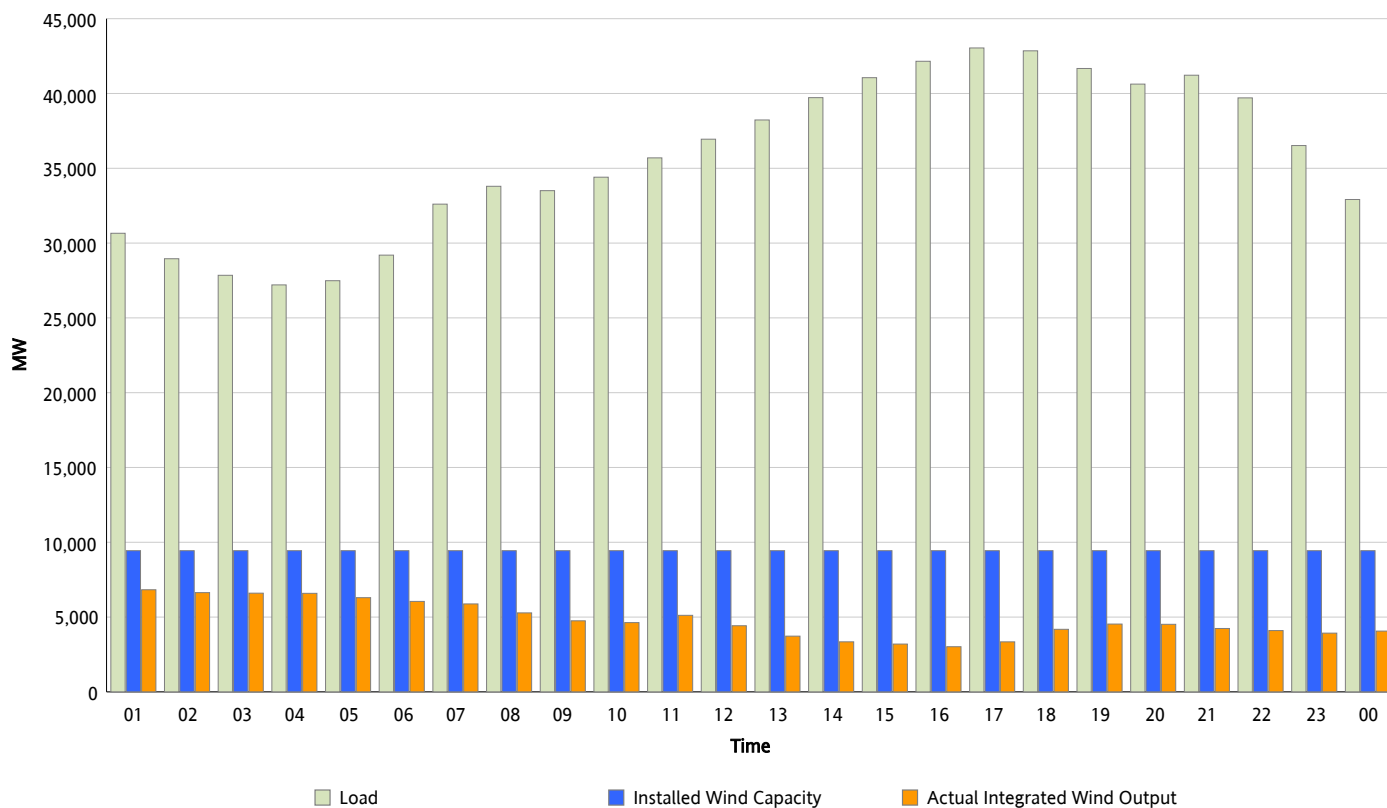


ERCOT Grid Operations

Wind Integration Report : 04/02/2012

Peak Load	43,045 MW
Load Peak Hour (HE)	17
Wind Over Peak	3,344 MW
Wind Record 03/18/12	7,917 MW
Max Wind Value*	7,061 MW
Wind Peak Time	00:07
Wind Integration %	22.55 %

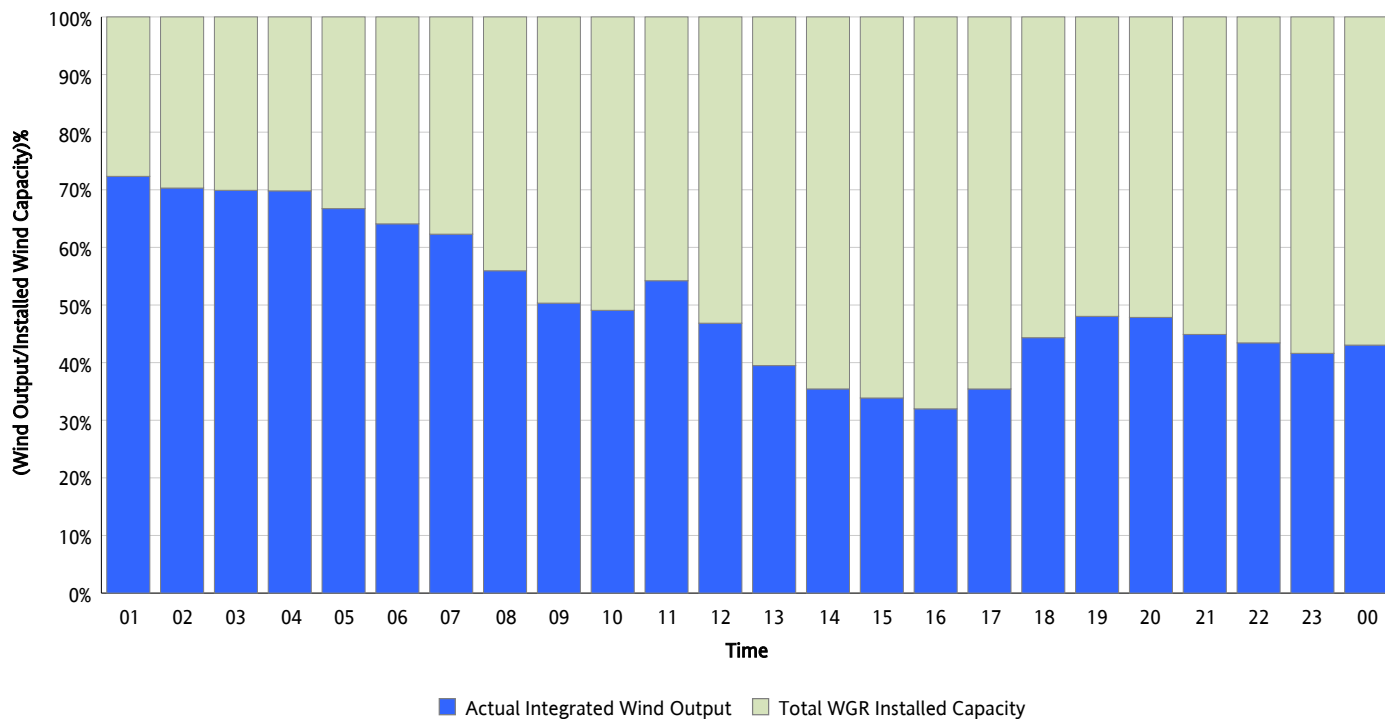
Hourly Average Actual Load vs. Actual Wind Output
04/02/2012



** Wind Record and Wind Max represent instantaneous values and the rest of the values are integrated over the hour*

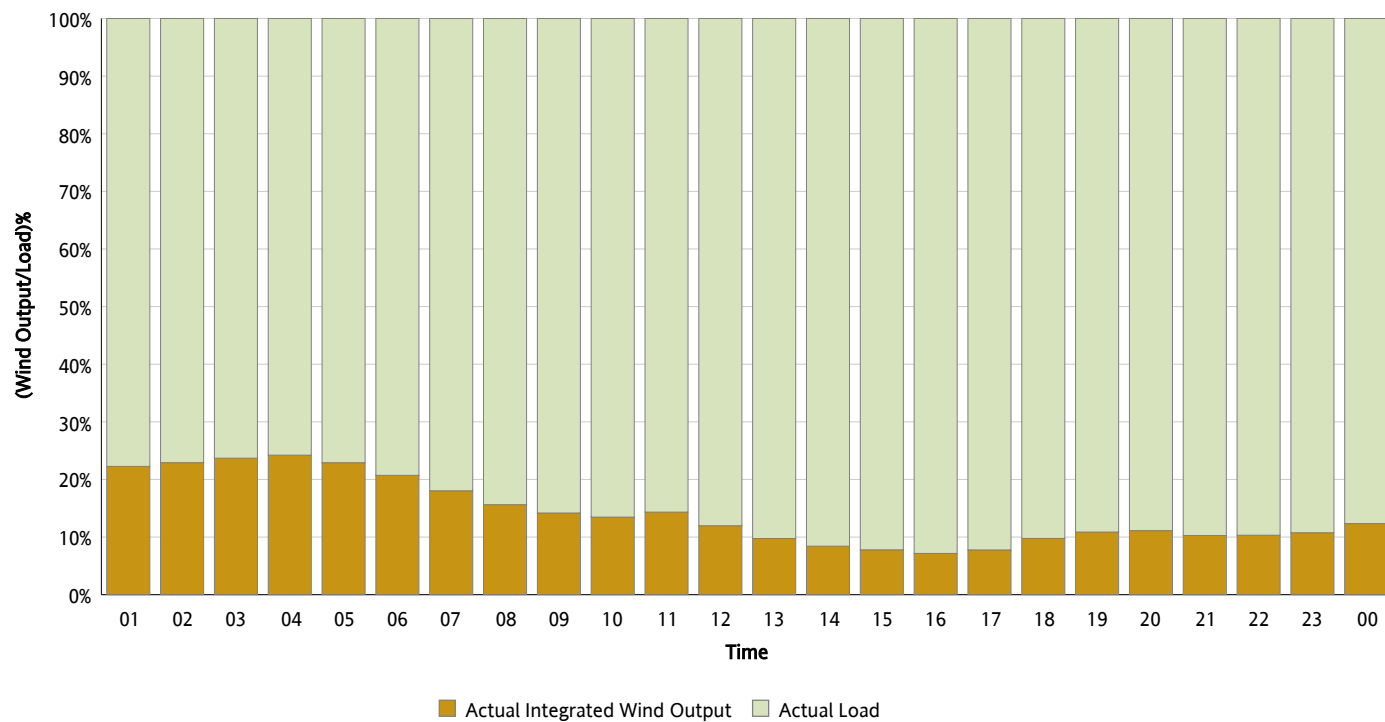
Actual Wind Output as a Percentage of the Total Installed Wind Capacity

04/02/2012



Actual Wind Output as a Percentage of the ERCOT Load

04/02/2012



ERCOT Load vs. Actual Wind Output

03/26/2012 - 04/02/2012

